

PLC200 Module 6 RSLogix5000 Instructional Videos

Created by Tom Wylie

On 4/18/16

Module Objectives:

- Explain how to access the Instructional Videos within RSLogix5000
- Navigate to the RSLogix5000 Instructional Videos
- Utilize the navigational bar within the Instructional Videos

Transitioning from RSLogix500 or RSLogix5, to RSLogix5000 is not an easy transition. RSLogix5000 is completely different from the legacy programming software.

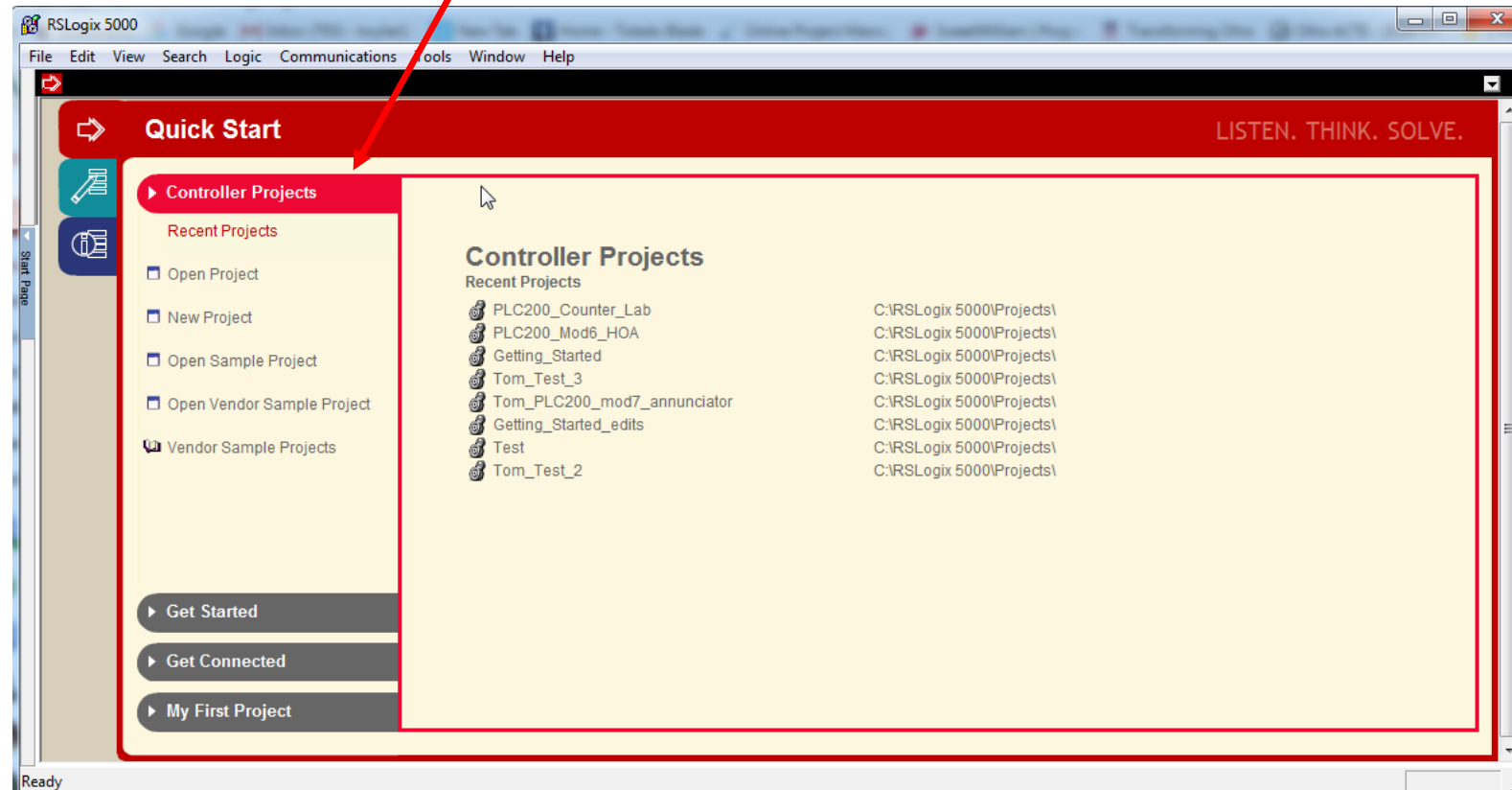
There is a wealth of instructional videos built within the RSLogix5000 application, that will assist the user in using RSLogix5000.

The Quick Start menu appears when the RSLogix5000 software is executed.

There are 4 sections:

- *Controller Projects
- *Get Started
- *Get Connected
- *My First Project

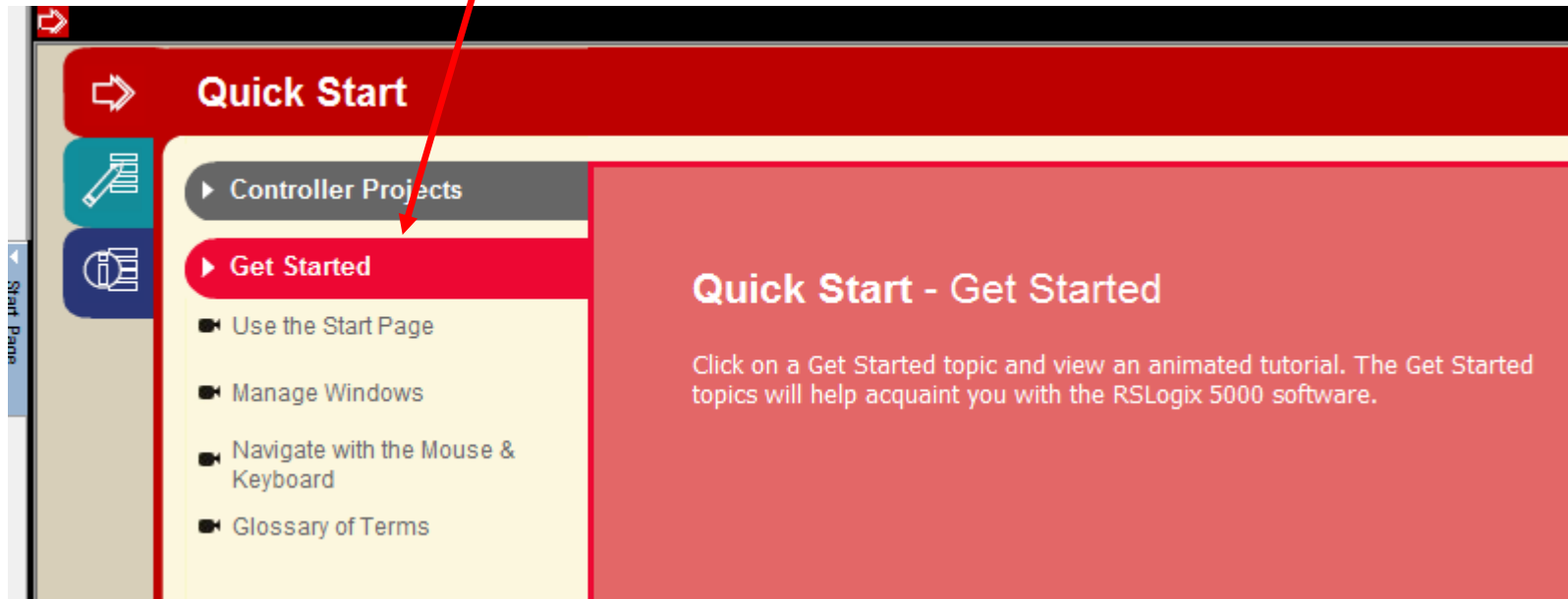
Controller Projects is a simple way (shortcut) to create or open an existing project



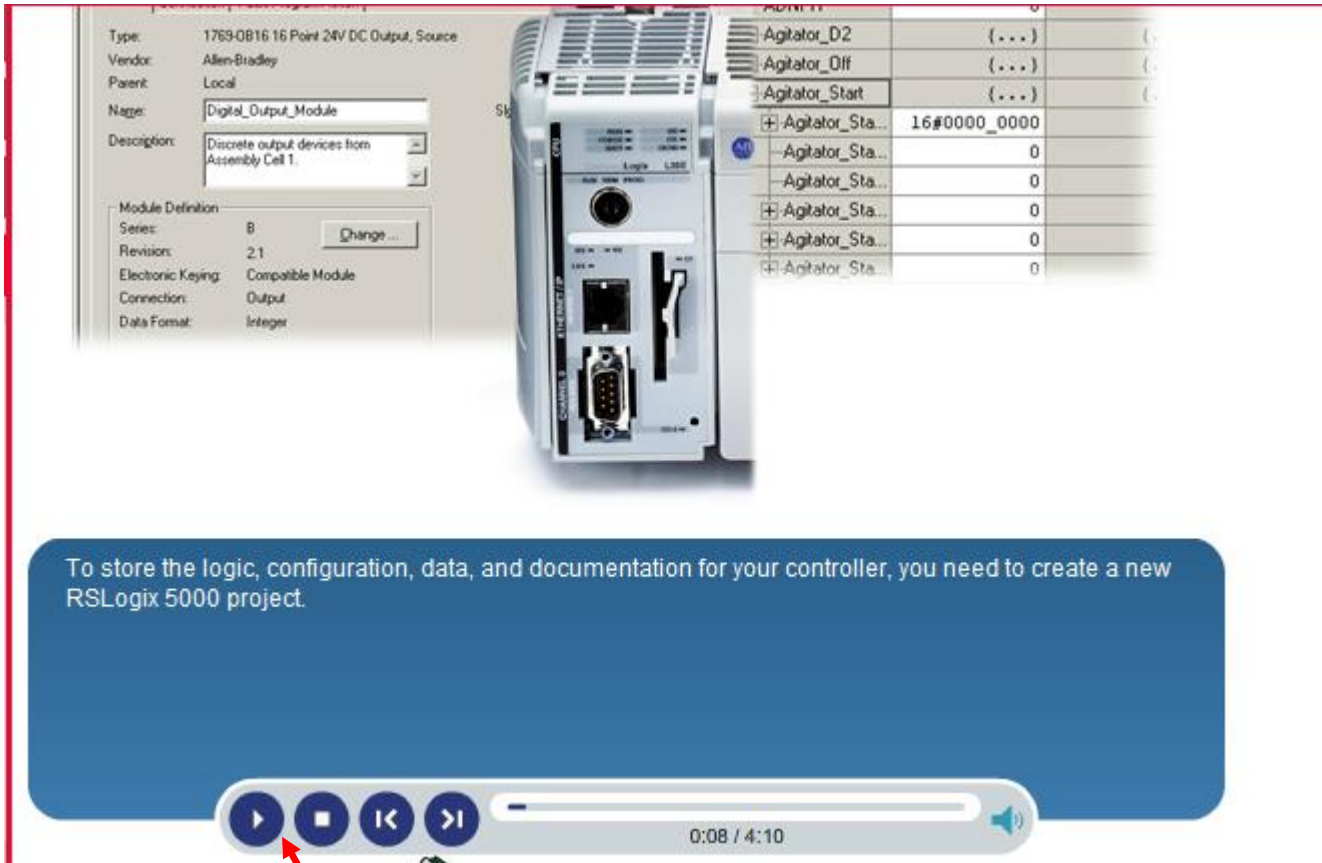
Get Started has videos that will explain to the user, how to navigate within the RSLogix5000 software.

The Get Started tab will have videos on how to navigate within the RSLogix5000 software.

There are a number of key sequences that create shortcuts within the RSLogix5000 software, as well as methods of changing toolbars and moving windows within the software.

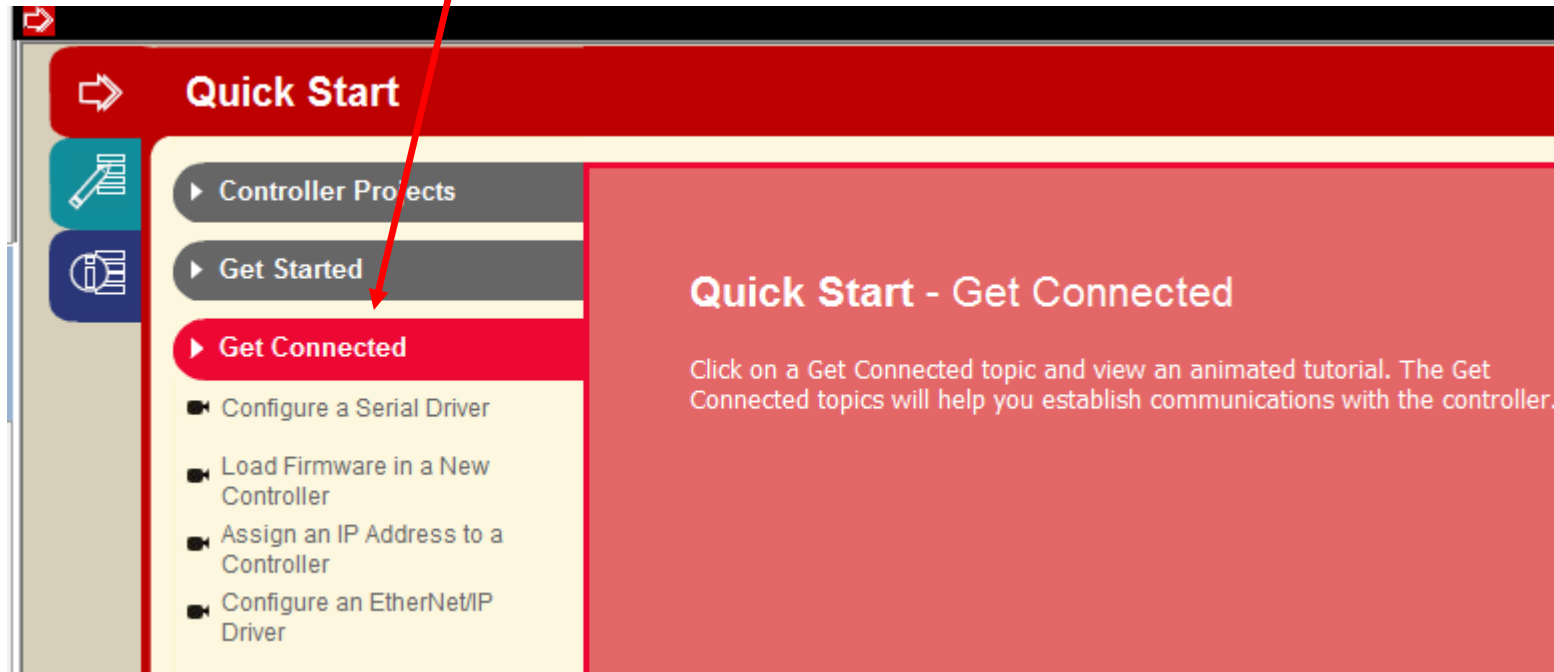


When a video starts, it does not fill up the screen. The user may have to scroll down to the bottom of the video window to get to the video control bar.



Use the navigational bar at the bottom of the video screen to stop, start and navigate through the video.

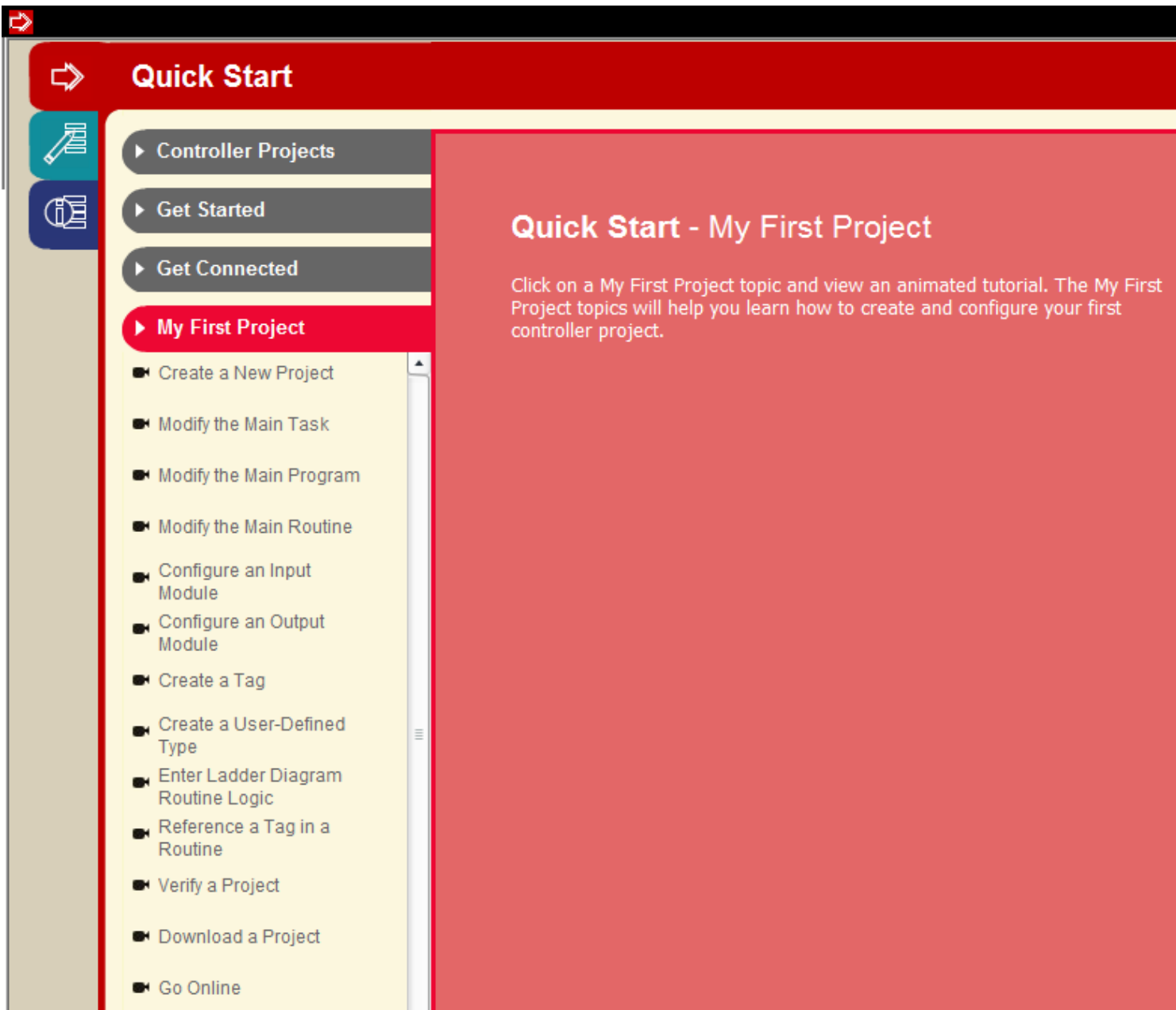
Get Connected has videos that will assist the user in getting connected with the processor



The Get Connected tab has multiple videos that will assist the user in setting up communications between the programming panel and the CompactLogix processor.

These will be the standard methods used to setup drivers in RSLogix, and to set the IP address on the Ethernet port of the controller.

Another very important video, will be on the steps required to update the firmware of a controller.



The My First Project tab has the most videos. These videos will go through a step by step process of how to create a project, create tags, and download the project to the controller.

There are 16 videos in this tab, each approximately 5 minutes in length.



DOL DISCLAIMER:

"This workforce product was funded by a grant awarded by the U.S. Department of Labor's Employment and Training Administration. The product was created by the grantee and does not necessarily reflect the official position of the U.S. Department of Labor. The U.S. Department of Labor makes no guarantees, warranties, or assurances of any kind, express or implied, with respect to such information, including any information on linked sites and including, but not limited to, accuracy of the information or its completeness, timeliness, usefulness, adequacy, continued availability, or ownership. This product is copyrighted by the institution that created it."



This work is licensed under a [Creative Commons Attribution 4.0 International License](https://creativecommons.org/licenses/by/4.0/).